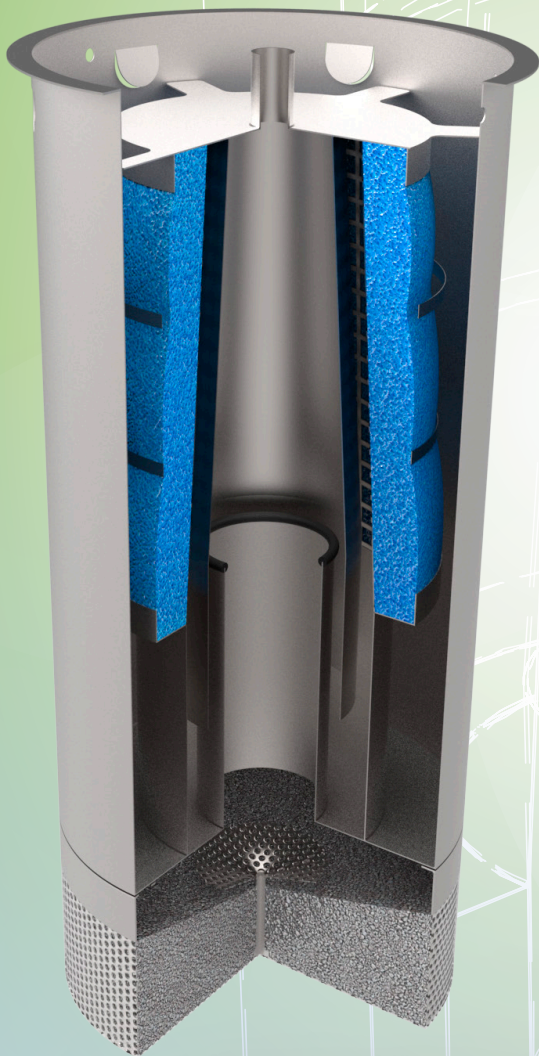


ENVIA[®] VIVO

New stage in stormwater treatment

- two staged treatment
- heavy metal removal
- substrate technology
- high-grade steel casing



VIVO

PURECO 
THE PURE ECO

www.pureco.eu

ENVIA VIVO

New stage in stormwater treatment

Heavy metal removal with substrate technology

Due to the growth of road traffic and road networks a significant and increasing amount of dense gaseous, liquid and solid pollutants - including harmful heavy metals - are polluting the environment and contaminate the precipitation running off the roads. Some of the contaminants are fuel residues (unburned fuel), materials used as additives, lubricants. Other contaminants are remains derived from the operation of the vehicle's worn parts and friction. These primarily contain metallic components. Heavy metals are washed off into our surface and ground

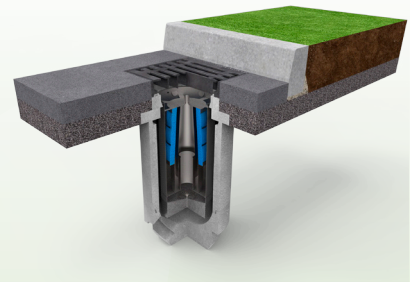


waters by precipitation falling on the road's surface thus harmfully affecting our health through damaging plants and vegetables cultivated along the roads and motorways. The pollutant retention in run-off rainwaters and storm water pre-treatment along road infrastructures is absolutely crucial. Future storm water management and its challenges need to be taken into account already during the design phase of our urban and road infrastructures.

New stage, two stage

In order to treat polluted stormwater washed off the roads we developed a two-staged stormwater-purifying system. The first stage is real physical oil separation (non-absorption), phase separation and coalescence technology. With the combination of the technologies we remove the solid particles, leaves, dust, sludge and the oil particles from the stormwater and keep the oil content under the limit of 5 mg/l (the system is ready to reach 2 mg/l) as well.

ENVIA Vivo is suitable not only for filtering and separating of contaminants of rainwater to be polluted by sediments,



but with applying the second stage substrate technology the product is capable to remove heavy metals (nickel, chrome, lead) up to 80%.

Installation

The ENVIA VIVO is the evolution of the ENVA CRC system, 100% compatible with the previous version, easy to install into already existing gully-holes.

The contaminated incoming rainwater, coming through the equipment, continues its way in the sewage network system towards recipient but only after a two-staged filtering process.

Due to its complex formulation ENVIA Vivo is a cost-effective, innovative solution for stormwater treatment. The two-phase technology enables to treat 5 liters of rainwater in every second.

Name: PURECO/ENVIA® VIVO

Material Stainless steel

Efficiency (TPH) 5 mg/l

Efficiency (Heavy Metals) ~70%

Capacity 5 l/s

Dimensions

Diameter 330 mm

Height 800 mm

Weight 45 kg

Advantages

Real oil separation with sludge trap

High-grade steel casing

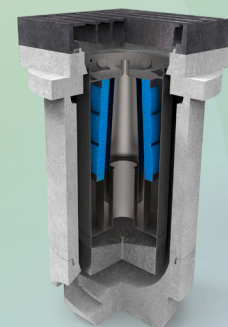
Simple and quick installation

Robust construction

Compact design

High operation safety

Long durability



address: H-1118 Budapest, Rétköz u.5. • BudaWest Office Building • phone: +36 1 224 0670

fax: +36 1 224 0679 • e-mail: info@pureco.hu • web: www.pureco.hu

The figures are for illustration. The technical changes, errors and typographical errors subject to change.

Published by Pureco Ltd. Copies: 15 000

PURECO
THE PURE ECO